

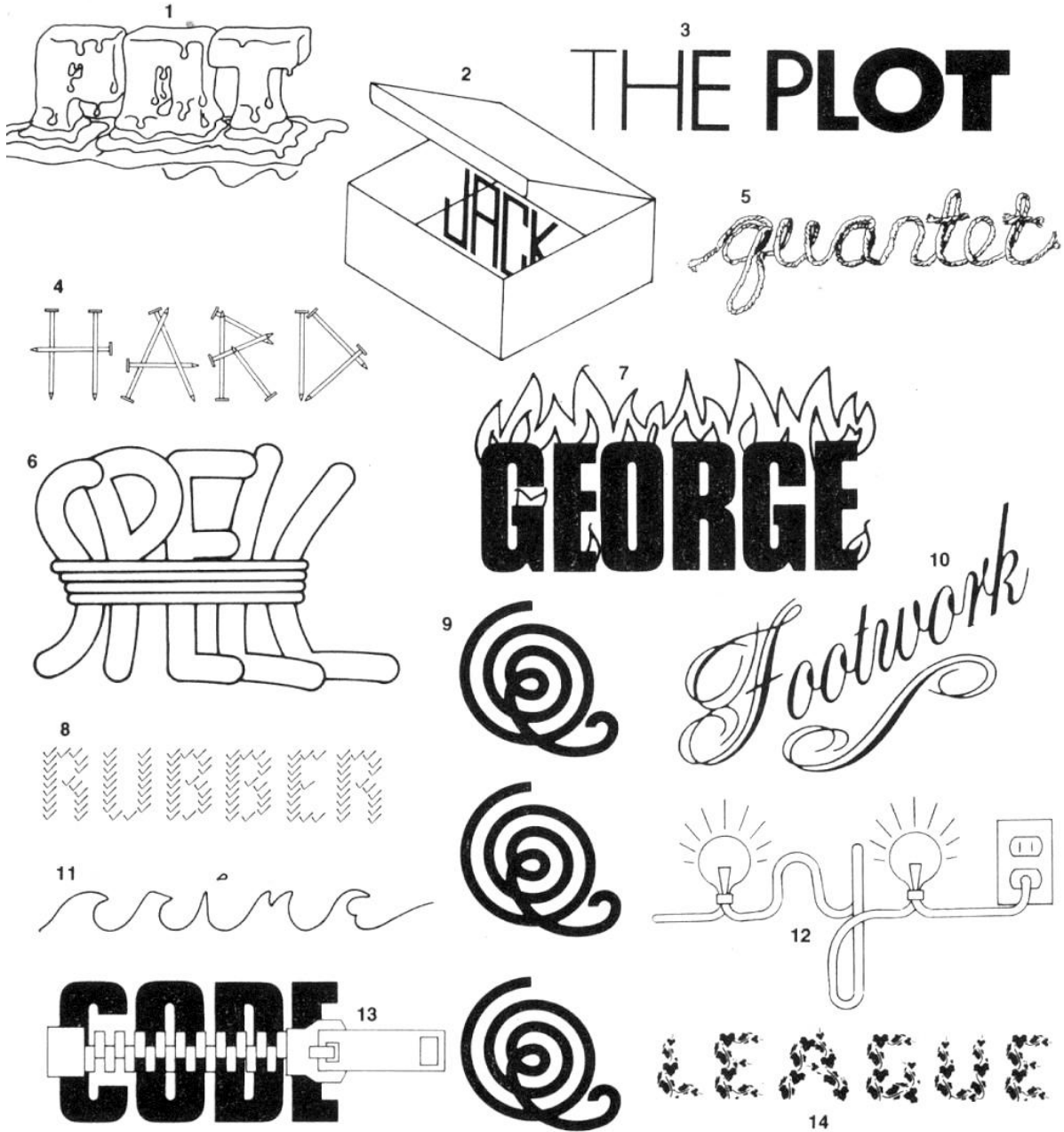
## Wackie Wordies #62

### Wacky Wordies Return! ★☆

We know. We swore in our July/August 1981 issue that Wacky Wordies would never appear in GAMES again. But a year and a half after their announced *final* final appearance, readers still write asking for more. Here then, by popular demand, are two more pages of them, composed in odd moments (very odd moments) by the editors at the magazine.

Warning: These are positively, absolutely, unalterably the last Wacky Wordies we're ever doing.

Directions: The object is to discern a familiar word, phrase, saying, or name from each pictorial letter arrangement. For example, # 1 depicts the phrase "melting pot." Wacky Wordie # 2 shows a "jack-in-the-box."



15 HOME

16 TTTT TTTTTT TTTTTT TT TTTTTT TT  
TT TT TT TT TT TT TT TT TT TT  
TT TT TT TT TT TT TT TT TT TT  
TTTT TT TT TT TT TT TT TT TT TT

17 IDIOT

18 SALES

19 B B B

20 ACT

21 cross

22 HOPE

23 panic

24 M  
E  
N  
T  
A  
L

25 PORCVS

26 diet

27 SISTERS

30 OK

28 THUMB

29 PROMISE

Answers

**Wacky Wordies Return!**

- |                     |                                |
|---------------------|--------------------------------|
| 1 Melting pot       | 17 Blooming idiot              |
| 2 Jack-in-the-box   | 18 Sales tax                   |
| 3 The plot thickens | 19 Bobolinks                   |
| 4 Hard as nails     | 20 Disappearing act            |
| 5 String quartet    | 21 Cross-stitching             |
| 6 Spellbound        | 22 <i>The Great White Hope</i> |
| 7 George Burns      | 23 Panic button                |
| 8 Rubber checks     | 24 Mental blocks               |
| 9 Curlicues         | 25 Pig Latin                   |
| 10 Fancy footwork   | 26 Diet of Worms               |
| 11 Crime wave       | 27 Pointer Sisters             |
| 12 Electric eye     | 28 Thumbscrews                 |
| 13 Zip code         | 29 Broken promise              |
| 14 Ivy League       | 30 Spiral notebook             |
| 15 Home stretch     |                                |
| 16 Strip tease      |                                |